

Research in the Trust

Report for Quality Academy

June 2022

This report provides an update on some of the research activities in the Trust, highlighting some of the activities of our research teams and provides information on some of the developments that are happening.

Clinical Research

Research engagement and CQC

We continue to embed research as part of routine clinical care throughout the Trust.

The new Trust nursing and midwifery strategy has been published after consultation with the research nurses and includes the following objectives:

- Understand what evidence-based practice is, can locate and critique research findings, and be able to implement them into practice as appropriate
- Understand the benefits of clinical and nursing research in the provision of patient care
- Promoting careers in nursing research
- Seeking opportunities to promote nursing research, closing the gap between research and practice
- Improving partnership working between clinical and research teams to improve the quality of care that we provide

The Research Matron has joined the new shared governance council to continue to embed research as everyday business and provide opportunities for clinical nurses and midwives to be involved in research as per the CNO nursing research strategy. She is also contributing to creating a trust research/journal club for nurses/midwives/AHPs as part of the Magnet project to increase awareness of research, disseminating evidence into practice and support for career pathways in research.

Promoting research – International Clinical Trials Day

To celebrate International Clinical Trials Day we collaborated with our City of Research colleagues to host a stall in the Broadway Shopping Centre in Bradford to publicise the City of Research Registry (a registry for people to sign up to take part in research studies) and have been featured on local BCB radio and in a film commissioned by Bradford Council for the Bradford City of Culture 2025 bid titled "people make Bradford" and it's highlighting people and organisations in Bradford who are innovating something new or doing something creative in the city. Additionally to celebrate ICTD we had an extensive social media campaign that showcased our research teams and our research experience.

Additionally to celebrate ICTD we had an extensive social media campaign that showcased our research teams and our research experience.



Cross-Specialty Research Team
bradfordresearch.nhs.uk

Happy International Clinical Trials Day
bradfordresearch.nhs.uk

NIHR | National Institute for Health and Care Research
Patient Recruitment Centre: Bradford

#3 PARTICIPANT EXPERIENCE

Our PRC is a dedicated, high quality, clean and safe research space that offers a comfortable and friendly environment to research participants. Our research participant experience is paramount and we pride ourselves on our excellent track record of this. In 2020 & 2021 Patient Research Experience Surveys, 96% of our PRC research participants said they would consider taking part in research again.

<https://local.nihr.ac.uk/prc/bradford/> @PRCBradford prc.bradford@bthft.nhs.uk

NIHR Patient Recruitment Centre: Bradford

Our Patient Recruitment Centre has been successful in recruiting Europe's first participant to take part in ATLAS. Sanofi-Aventis Recherche & Développement, launched the phase 3 clinical trial of Dupilumab, in the UK on Thursday 9 June 2022 and our PRC enrolled the first participant that same day. The study will investigate the effectiveness, safety and

tolerability of a new treatment called Dupilumab, which is administered as an injection. The study will assess the long-term effect of dupilumab on prevention of lung function decline in adult patients with uncontrolled moderate to severe Asthma.

APPLIED HEALTH RESEARCH

Quality and Safety Research Group

This quarter we focus on two studies being delivered by our team: Learn Together and RESI-Med. Both are sponsored by BTHFT and we are working closely with the Patient Safety team at BTHFT to deliver the former.

Learn Together – supporting involvement in safety investigations

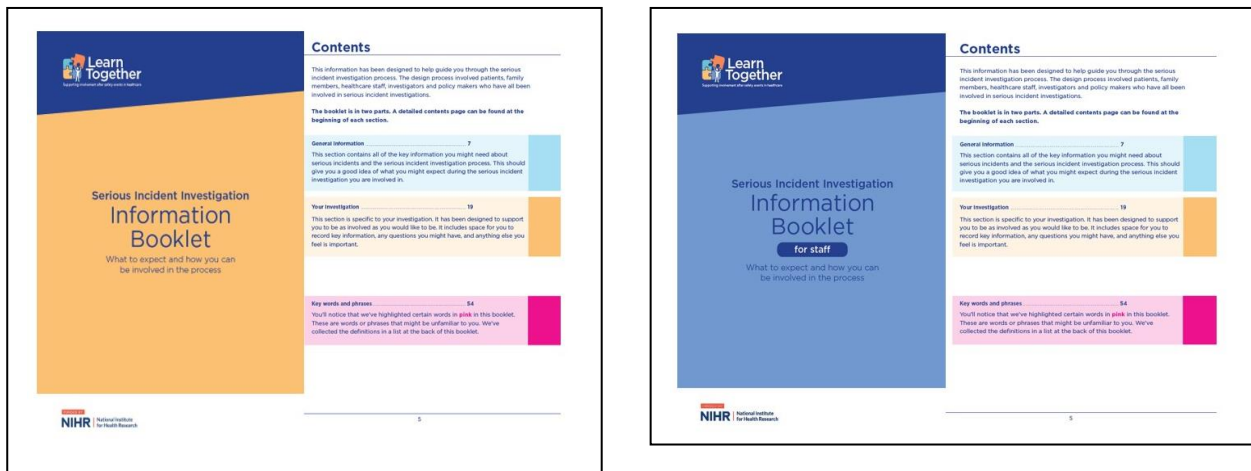
Our NIHR-funded research programme to develop guidance for supporting involvement in safety investigations, commenced in November 2019. In this programme we started by exploring how policy documents support involvement, and what safety investigations are like for patients and families, staff and investigators. Using this information, we co-designed new materials to support involvement, with a community of over fifty people, comprising harmed patients and families, staff, investigators, healthcare managers, policy makers and legal representatives.

Our new guidance comprises two main types of supporting material. The first is information and training for investigators to support patients, families and staff through safety investigations. Investigators are crucial in the process of involvement and engagement.

Contents	
Introduction	4-5
Common principles for involvement	6-7
What do people need during an investigation?	8-9
Support resources	10-11
Making it work in practice	12-13
Prepare yourself	14-15
Initial contact	16-17
What to cover	18
Clear introduction	19
Explaining the incident	20
Explaining the process	21
Discussing support needs	22
Rebuilding confidence	23
Investment preferences	24
Continued contact	25-26
What to cover	27
Terms of Reference	28
Sharing experiences of the incident	29-30
Draft report	31
Discussing support needs	32
Rebuild investment preferences	33
Closing contact	34-35
What to cover	36
Preparing contact	37
Final report	38
Further investigation	39
Opportunities for further involvement	40
Forum and all the process	41
Preparing report	42
Support for you	43



The second type of supporting material is documentation specifically aimed at patients and families, and healthcare staff. These materials have been co-designed to support people going through a safety investigation, helping them to navigate and understand what can be a confusing and emotional process.



This guidance is now being tested across four regional NHS Trusts – including BTHFT – and nationally with the Healthcare Safety Investigation Branch (HSIB). We are aiming to ‘follow’ 25 investigations in real time, with trained investigators using the new guidance to support them in engaging with patients, families and staff. The testing phase continues until the end of this year, after which time we will be revising the final versions of the documentation.

Our programme has also been involved as one of three partners developing national level guidance for the involvement of patients and families in responding to safety events. Working with the NHSEI Patient Safety Team and the HSIB, we have developed new guidance that will sit alongside the incoming Patient Safety Investigation Framework. This new framework, and our associated guidance for involvement, is due to be published in Summer 2022.

RESI-Med

RESI-Med is funded by an NIHR Research for Patient Benefit grant to BTHFT (April 21- March 23) to develop an intervention to support safe medicines self-management for home-dwelling older people with frailty. The research team conducted a rapid review of interventions, which is ready to submit for publication. Recruitment and data collection in phase 1 of the study (qualitative research with patients (32) and staff (16)) is also complete. We created a 20-minute film, edited from patient interviews, to kick-start an experience-based co-design with pharmacy and community healthcare staff and patients. So far, we have held two co-design meetings with patients (15 participants), two with staff (15 participants) and one joint meeting (17 participants).

Three main co-design priorities were generated.

1. Day to day practical management of medicines
2. Understanding and navigating the wider medicines management system
3. Communication with the healthcare teams



The first phase of co-design workshops has been held and three candidate interventions will be taken forward to the next set of workshops in June 2022.



New International Collaborative - Ageing Research Trialists (ART) Steering Committee

Professor Andrew Clegg (Theme Lead for our Older People with Frailty theme in Applied Research Collaboration Yorkshire and Humber) is the Chair of the newly established Ageing Research Trialists (ART) Steering Committee. This international collaborative brings together trialists with a common focus on transforming care for older people across nations. The team will support individual participant data meta-analysis (IPDMA) in ageing research.

The inaugural paper of the ART collaborative has just been published, please read here:
<https://doi.org/10.1093/ageing/afac090>



New award



Congratulations to Dr Oliver Todd who has gained a Post-Doctoral Enrichment Award with the Alan Turing Institute. The award will be used to run a series of multidisciplinary workshops to bring together diverse stakeholders to drive use of Data and artificial intelligence to address what matters most to older people. This will involve representation from older people, carers, professionals, commissioners and policymakers, with a specific focus on driving implementation of findings into routine practice.

Improvement Academy

In April 2022 the Improvement Academy held an away day where we reviewed the current training on offer, and identified what changes and potentially what additional training packages might be required to address the needs of teams and organisations in the future. Related to this, the Human Factors training developed by the Academy forms part of the National Patient Safety Syllabus and is now available through ESR for staff, with different levels being available dependent on whether your role is clinical or non-clinical in nature; alternatively you can complete the Bronze level training with the Academy. Furthermore, in April we welcomed Vishal Sharma to the Academy as the new Associate Director.



Having previously worked with the Bradford Institute for Health Research, Vishal went on to complete his PhD and subsequently worked at the Leeds and York Partnership Foundation Trust.

Born in Bradford

Born in Bradford (BiB) aims to understand why some families fall ill and why others stay healthy. We are a people powered research project, and together with our communities and stakeholders aim to make positive changes to improve the lives of families living in our city and beyond. We host three birth cohort studies (the [Born in Bradford Family Cohort](#), [Born in Bradford's Better Start](#) and [BiB4All](#)) encompassing over 50,000 Bradford residents in addition to a range of other initiatives including the [Better Start Bradford Innovation Hub](#), [Bradford Inequalities Research](#), the [Healthy Childhood theme of the Yorkshire and Humber Applied Research Collaboration](#), [Connected Bradford](#), [Join Us: Move Play](#), the [LEAP](#), the [Centre for Applied Education Research](#) and various other externally funded applied health research studies.

Bradford City of Culture 2025 success

Born in Bradford were delighted to be key partners of the bidding team who won the coveted title of Bradford City of Culture 2025. The panel, led by head judge Sir Phil Redmond were impressed by the potential to deliver additional social value through partnership with the Born in Bradford study. The BiB team will be working with the City of Culture team to embed arts and creativity into their flagship BiB Age of Wonder project which will recruit up to 30,000 young people and follow them from adolescence to young adulthood. The study will be the first of its kind to explore the health and wellbeing impacts of arts and culture.



BiB leads the way in establishing the Born and Bred in (BaBi) network; an innovative network of local electronic birth cohort studies.

BORN & BRED IN

In 2019 BiB launched BiB4All, a study that aimed to approach all pregnant women to join a data linkage cohort study. The study aims to make use of routinely collected data from health, education, social care and other sources to build up a rich picture of families' lives over time. This data can then be used to help us understand what helps to keep families happy and healthy. Since the launch of the study, the BiB4All team have welcomed more than 11,000 women and their babies into the study. You can watch a short video that we co-produced with community members about how the study works here <https://www.babinetwork.co.uk/info-for-participants>



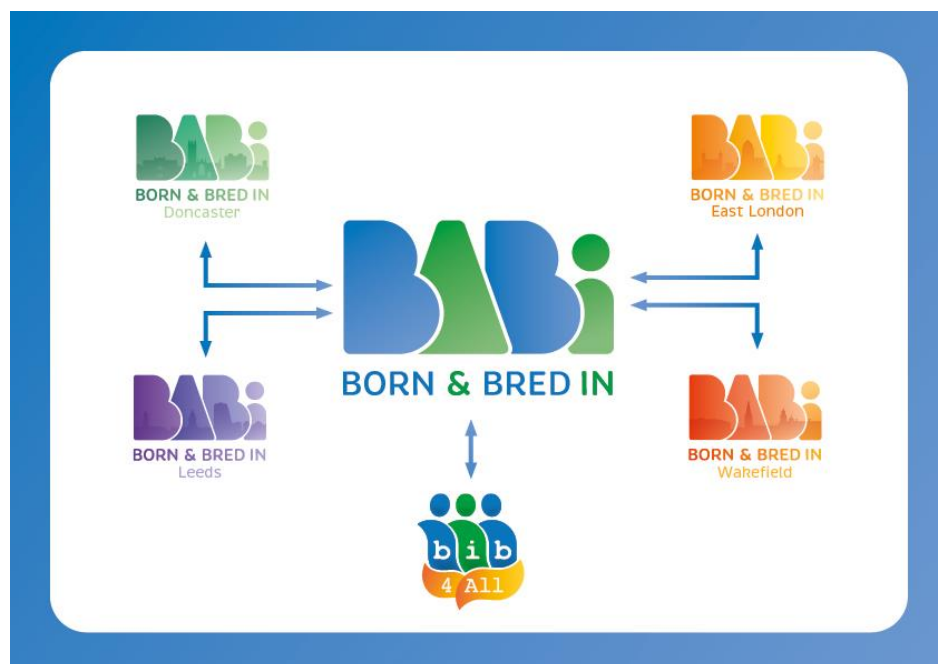
The data sources women consent to have linked as part of the study.

In order to make the study sustainable over time, the research team have trained all community midwives in Bradford to approach and consent pregnant women into the study. The team have also worked with the electronic patient record provider to embed the consent question into routine care. These two crucial elements mean that the study is integrated, sustainable and significantly more cost effective than similar traditional methods.

Following the success of BiB4All, other Trusts got in touch to ask about joining the study. As a result, BiB established the Born and Bred in (BaBi) network (<https://www.babinetwork.co.uk/>).

To date, we are supporting 5 sites to set up similar cohort studies (Wakefield, Doncaster, Leeds, Nottingham, East London) and in discussions with 3 more (Hull, Sheffield, Airedale). We have already been successful in leveraging more than £900,000 in funding to support the network, as well as supporting our 5 Trust partners to access further funding through the CRN.

Rather than bringing all of the data from the study to Bradford, we are working hard to support each site to host their own data, creating a rich resource for local practitioners and policy makers to better understand their population and make evidence informed decisions to improve outcomes for families locally. As the coordinating centre for the BaBi network, BiB is also developing a way of combining anonymised extracts of the data from each BaBi site to build a meta cohort which can be used by researchers to explore research questions. By bringing the data together in this way, we will have more power to explore questions of common interest or questions about rare conditions or particular groups.



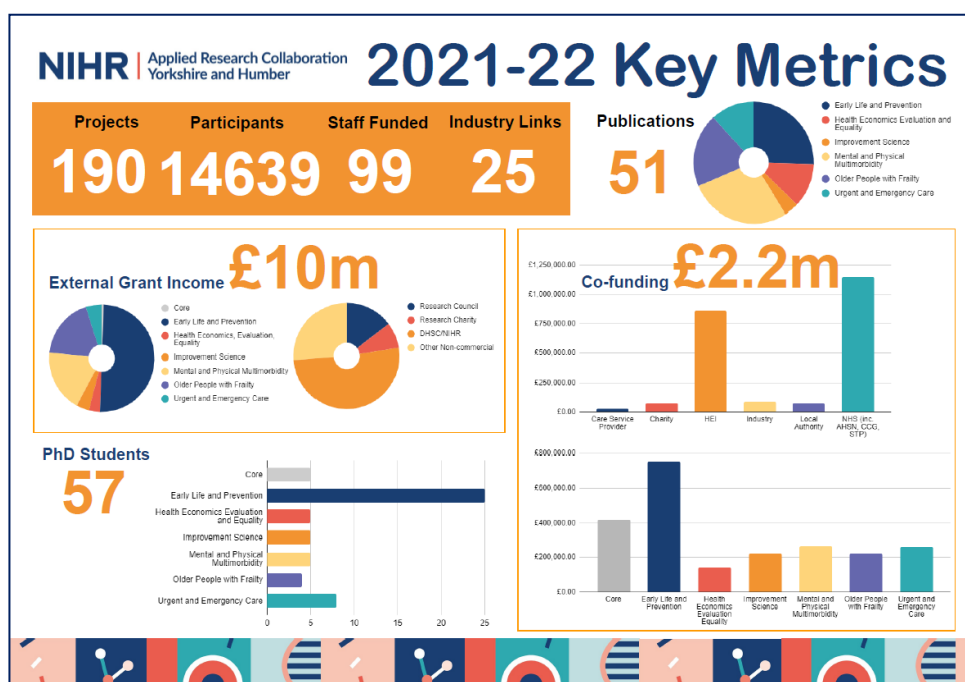
Current sites in the BaBi network

We have also supported sites to carry out stakeholder consultation workshops to identify the most important questions locally that the data should be used for. Creating this pipeline of research priorities with a broad range of local stakeholders ensures that the key individuals know that the data is there, ensures that data can be used for the most important things locally as soon as it's available, which we hope will speed up the translation of research findings into policy and practice.

We continue to work with our colleagues in the three ICSs in the region to plan a series of research engagement events. The focus of these events will be sharing findings, understanding the research priorities of our health and care partners, and building relationships. After initial discussions, these events are now provisionally planned for autumn 2022.

In West Yorkshire and Harrogate Health and Care Partnership YH ARC are taking the lead for research in the system. Together with the NIHR Clinical Research Network, YH ARC has convened and chair a Research Leadership Working Group for the ICS. This group will meet regularly to ensure that the statutory functions of the ICS with regards to research are achieved (i.e. the promotion of research relevant to health; the promotion of uptake of evidence from health research into practice), that research underpins decisions, and is used to drive improvements in health and care outcomes for our communities.

We are currently preparing our annual report for NIHR. During the last financial year, we have successfully delivered against our objectives. Across the region during this period YHARC attracted £10m in external grant income, £2.2m in co-funding from partner organisations, recruited 14639 participants across 190 projects and funded 99 staff members and 57 PhD students.



ActEarly

ActEarly is a UKPRP funded collaboration between Bradford and Tower Hamlets in London. The ActEarly vision is to create City Collaboratories in areas of high child poverty that provide research ready, people-powered and data-linked test beds to co-produce, implement and evaluate multiple early life interventions to prevent disease and reduce inequalities. Highlights so far in 2022 include positive feedback on our annual report from our funder the UKPRP; a shortlisted application for a local government award in collaboration with Bradford and Tower Hamlets councils, and a successful workshop with our partners and collaborators. More details about our work are available on the ActEarly website <https://actearly.org.uk>